

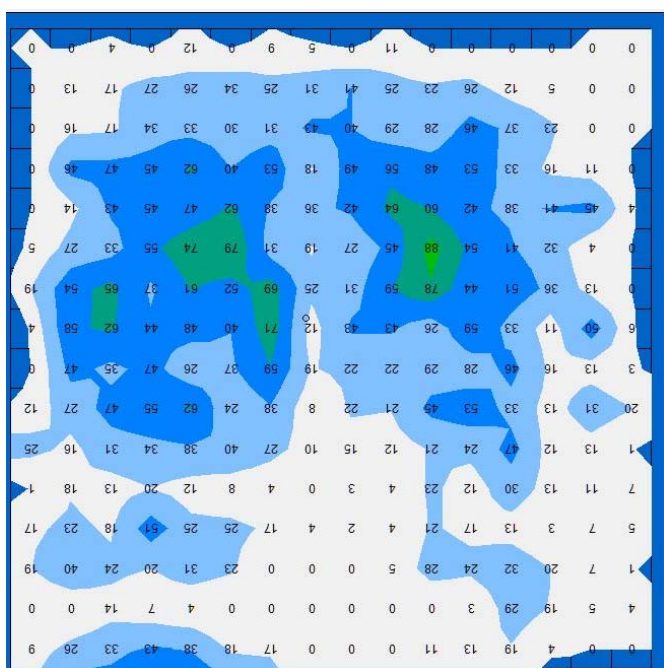
# Poser Coolover TR<sup>3</sup> sling evaluation.

August 2014

A quick test to evaluate the impact of a Poser Allday sling made with Coolover TR<sup>3</sup> fabric on the effectiveness of a highly conforming cushion.

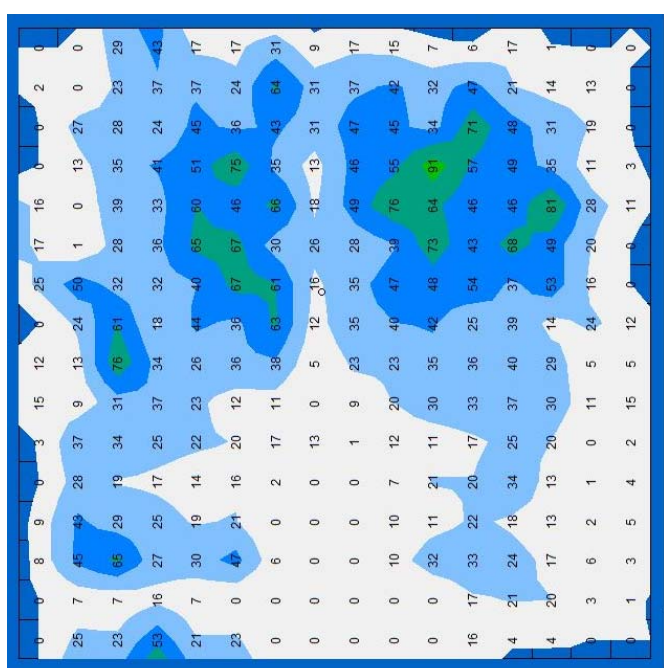
Recently tests have been published by sling manufacturers comparing pressure redistribution with and without a sling in place. The assumed intention is to reassure clinicians and users that it is acceptable to leave slings in place. Unfortunately these have been on non-conforming surfaces so are somewhat limited as clients at risk would be using a more conforming cushion.

Here we tested our own bespoke knitted temperature regulating fabric (Coolover TR<sup>3</sup>) on a highly conforming Starlock™ cushion. This fabric has been knitted to give adequate stretch to allow a cushion to conform as well as actively regulating temperature and drawing moisture away from the skin.



This result is for a healthy adult male sitting on a properly adjusted Starlock™ cushion, sitting with the feet slightly elevated. No sling was in place.

Average pressure was 24.5 mmHg and peak was 87.5.



The experiment was repeated with the sling in place.

Average pressure was 24.71 mmHg and peak was 90.91.

The conclusion here, is that for this subject the sling caused almost no measurable difference to the ability of the cushion to redistribute weight.



[www.symmetrikit.com](http://www.symmetrikit.com)

Tel: 01531 635388