



ARCHITECTS PACK

Symmetrikit is a division of The Helping Hand Company.

Symmetrikit Engineering, Bromyard Rd. Ledbury HR8 1NS

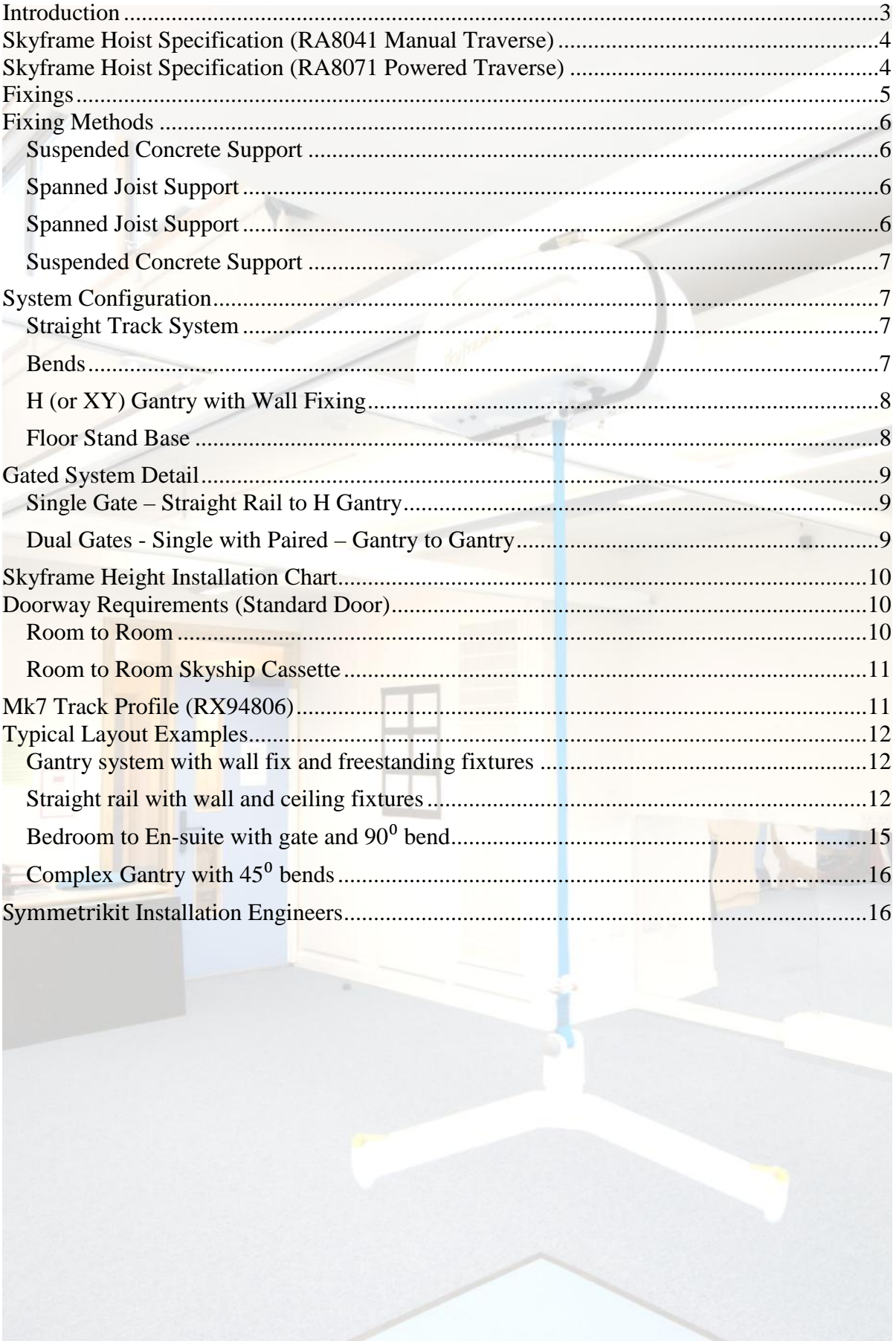
01531 634468

www.symmetrikit.com

**The Helping Hand
company** 

Contents

Introduction	3
Skyframe Hoist Specification (RA8041 Manual Traverse)	4
Skyframe Hoist Specification (RA8071 Powered Traverse)	4
Fixings	5
Fixing Methods	6
Suspended Concrete Support	6
Spanned Joist Support	6
Spanned Joist Support	6
Suspended Concrete Support	7
System Configuration.....	7
Straight Track System	7
Bends.....	7
H (or XY) Gantry with Wall Fixing.....	8
Floor Stand Base	8
Gated System Detail.....	9
Single Gate – Straight Rail to H Gantry.....	9
Dual Gates - Single with Paired – Gantry to Gantry.....	9
Skyframe Height Installation Chart.....	10
Doorway Requirements (Standard Door).....	10
Room to Room	10
Room to Room Skyship Cassette	11
Mk7 Track Profile (RX94806).....	11
Typical Layout Examples.....	12
Gantry system with wall fix and freestanding fixtures	12
Straight rail with wall and ceiling fixtures	12
Bedroom to En-suite with gate and 90 ⁰ bend.....	15
Complex Gantry with 45 ⁰ bends	16
Symmetrikit Installation Engineers.....	16



Introduction

I would like to take this opportunity to introduce Symmetrikit, part of The Helping Hand Company and give a brief outline of our services and products which may be of interest to you when engaged in the design of buildings or structures which need to cater for the moving and handling of the physically impaired.

The Helping Hand Company are a well established company in the manufacture and supply of products aimed at enabling elderly and physically impaired individuals live a more comfortable life, either in specifically designed accommodation, or in their own home or surroundings.

The Management team of the Company have over 100 years of combined design and manufacturing experience in this field.

Our complete overhead hoist system has been designed to simplify use and maximise reliability. The cassette (hoist motor & casing), has been designed to be easily serviced and maintained and should the unit fail for any reason, can be replaced in minutes, thus reducing 'down time' and enabling a rapid return to full hoisting facilities.

Enclosed with this letter is a general product overview showing sample layouts, alternative ceiling fixings, available track options such as bends, gates and turntables, doorway opening requirements, the Skyframe specification sheet and a brochure showing an installation which demonstrates both typical and diverse suspension methods.

It is important to obtain the specific hoisting requirements of the end user early in the planning process as it has implications on the room and furniture layouts.

I would like to close with a plea on behalf of all Overhead Hoist manufacturers, that due consideration be given to all new designs for any establishment that may require lifting facilities, that walls, and or ceilings, are designed to be load bearing and thus enable these installations to be effected without the need for additional structural work.

Stuart Moore
Chief Engineer



Skyframe Hoist Specification (RA8041 Manual Traverse)

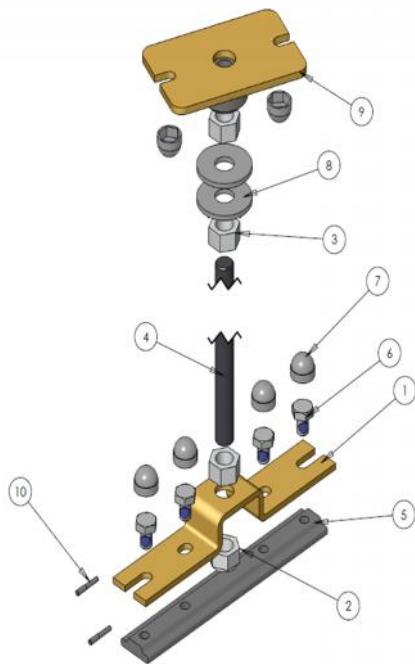
Capacity	160Kg/350lb.
Lifting Range	3.0 meters.
Lifting Speed	3.5 cm/s up, 4.5 cm/s down.
Electrical	24 volt dc. (15amp fused)
Charging	24 volt, 1amp trickle charge system.
Weight	9.8 Kg
Indicators	Green LED - charge indicator, Red LED - low battery warning
Safety	Override switch for emergency lower. Upper limit cutout switch
Auxiliary	Port for 24 volt auxiliary use.
Emissions	Complies with the EMC Emissions and Immunity Test EN60601-1-2 : 1993.
Testing	Tested in accordance with BS EN ISO 10535 : 1998
Conformity	Conforms the requirements of the Medical Devices 93/42/EEC Directive
Environmental	Components designed for use in humid areas, parts manufactured from corrosion resistant material. Excessive levels of Chlorine and other chemicals could cause corrosion and may necessitate additional servicing

Skyframe Hoist Specification (RA8071 Powered Traverse)

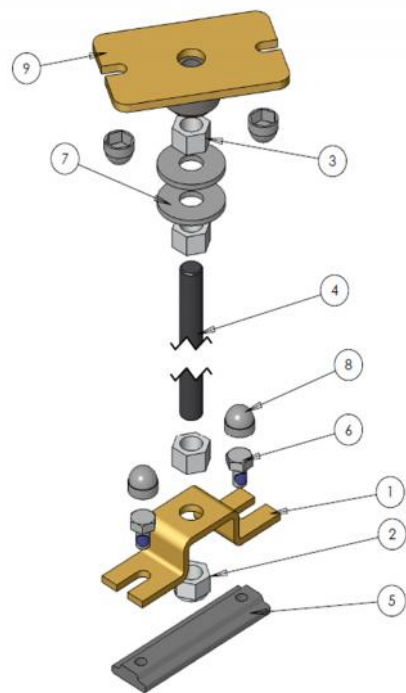
Capacity	160Kg/350lb.
Lifting Range	3.0 meters.
Lifting Speed	3.5 cm/s up, 4.5 cm/s down.
Traverse Speed	14 cm/s
Electrical	24 volt dc. 15amp fused)
Charging	24volt, 1amp trickle charge system.
Weight	12 Kg
Indicators	Green LED - charge indicator. Red LED - low battery warning.
Safety	Override switch for emergency lower. Upper limit cutout switch
Auxiliary	Port for 24 volt auxiliary use.
Emmissions	Complies with the EMC Emissions and Immunity Test EN60601-1-2 : 1993.
Testing	Tested in accordance with BS EN ISO 10535 : 1998
Conformity	Conforms the requirements of the Medical Devices 93/42/EEC Directive
Environmental	Components designed for use in humid areas, parts manufactured from corrosion resistant material. Excessive levels of Chlorine and other chemicals could cause corrosion and may necessitate additional servicing

Fixings

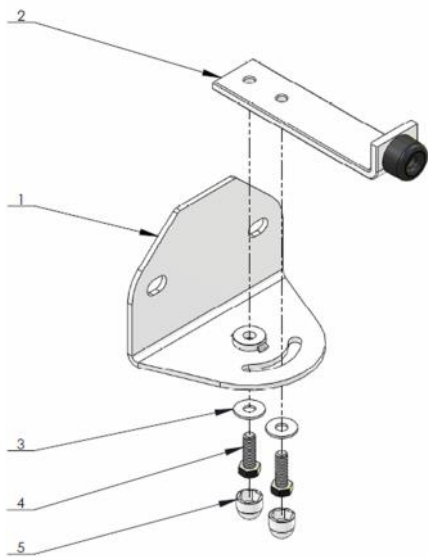
RA0866 Suspended Joiner Fix



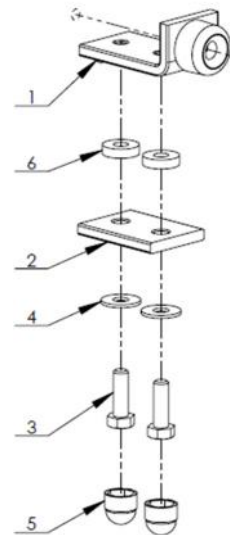
RA8065 Suspended Fix



RA0831 Wall Fix



RA8360 End Stop



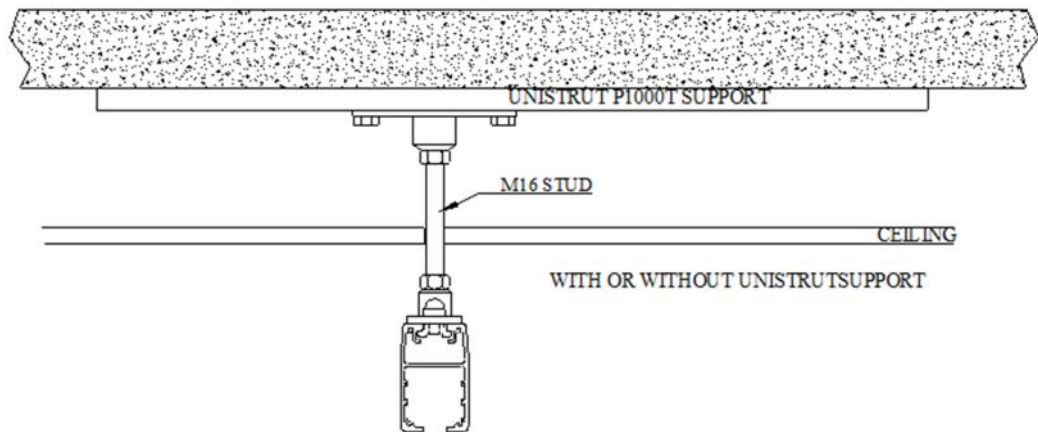
Related Fixings

RA0864 Suspended Bend Fix

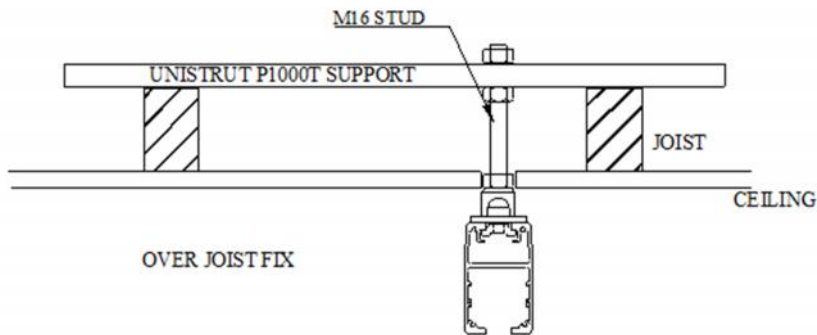
RA1873 Wall Ladder Fix

Fixing Methods

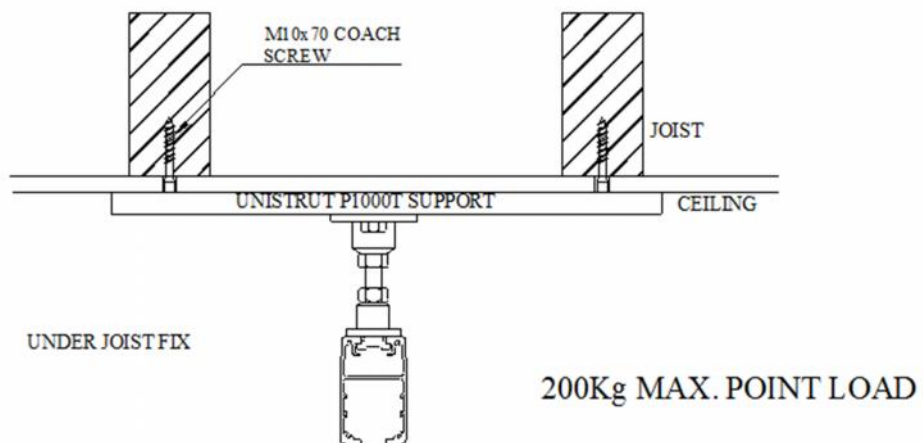
Suspended Concrete Support



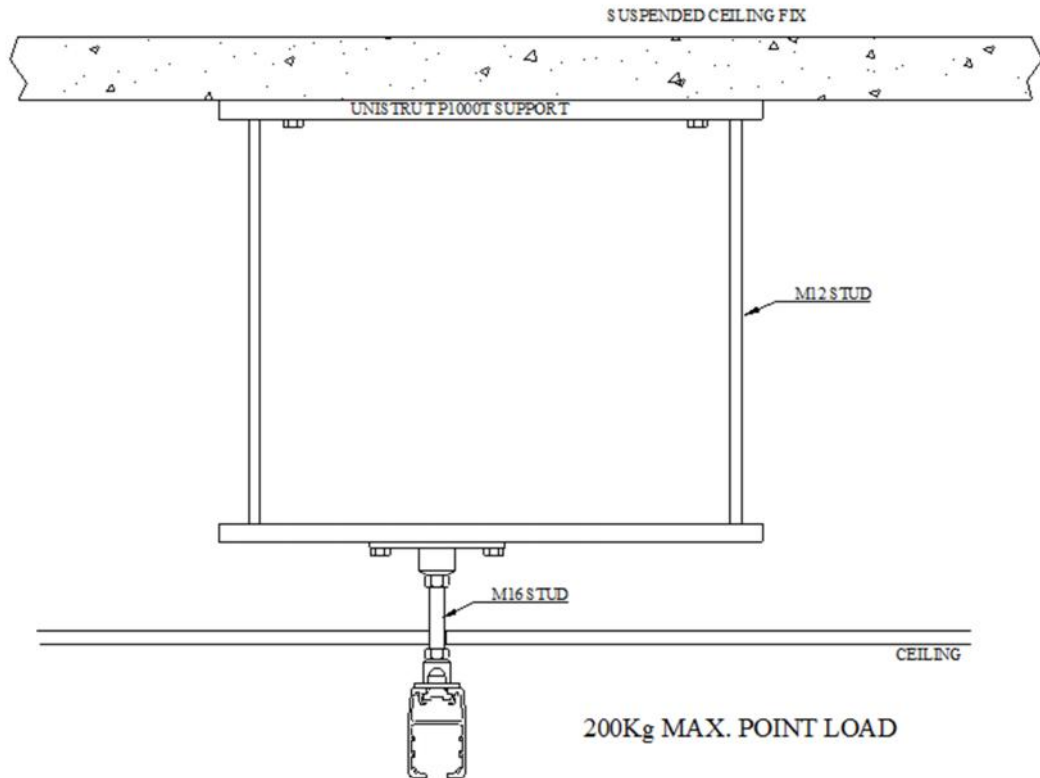
Spanned Joist Support



Spanned Joist Support

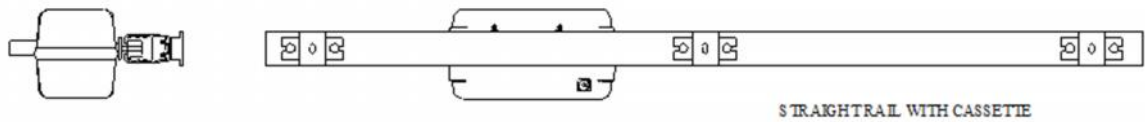


Suspended Concrete Support



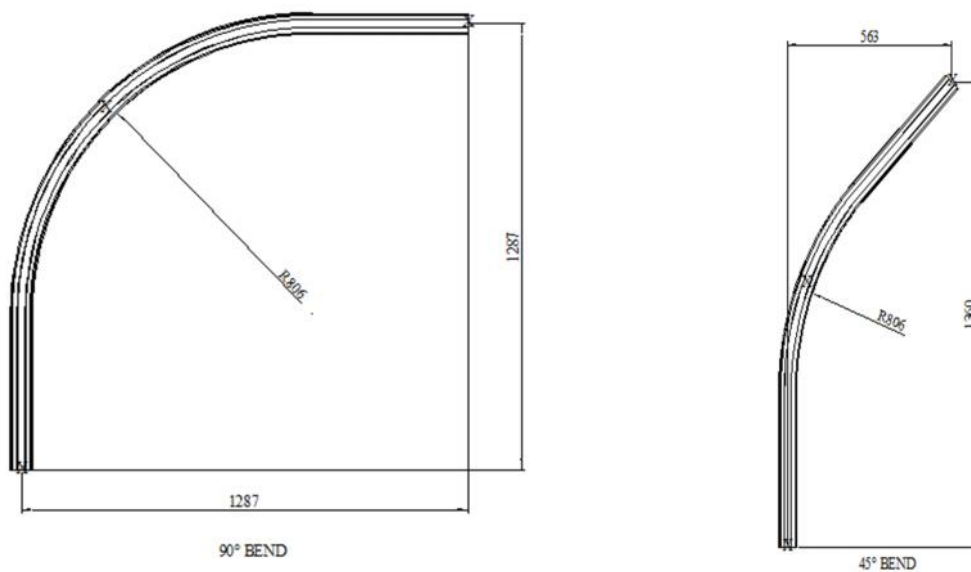
System Configuration

Straight Track System

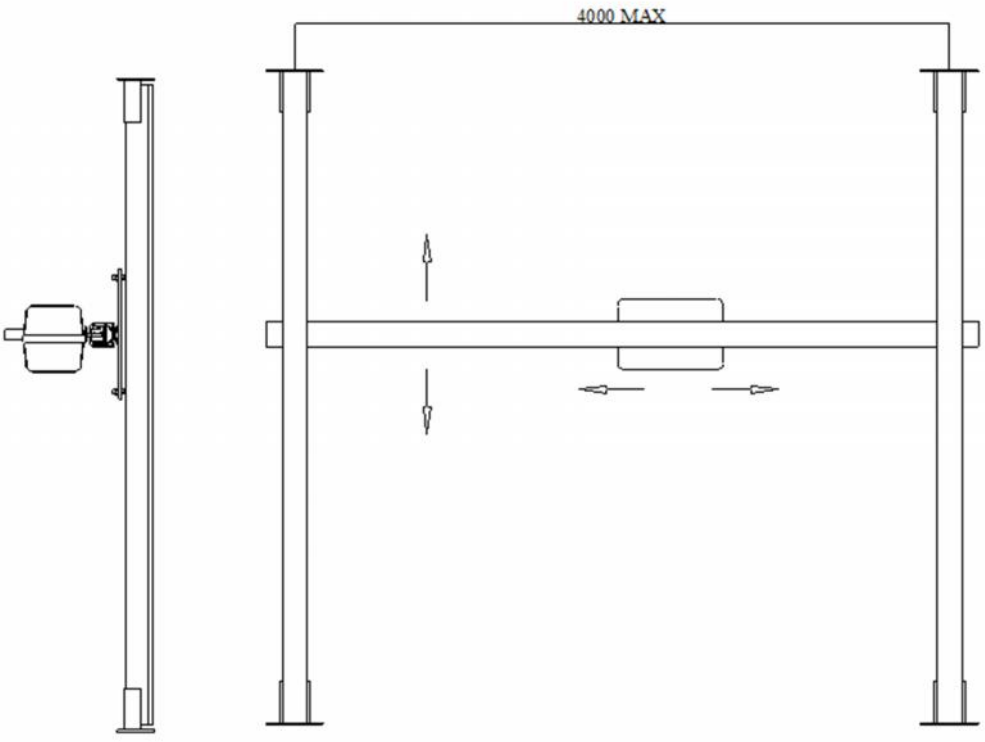


Up to 4m unsupported Mk7Section

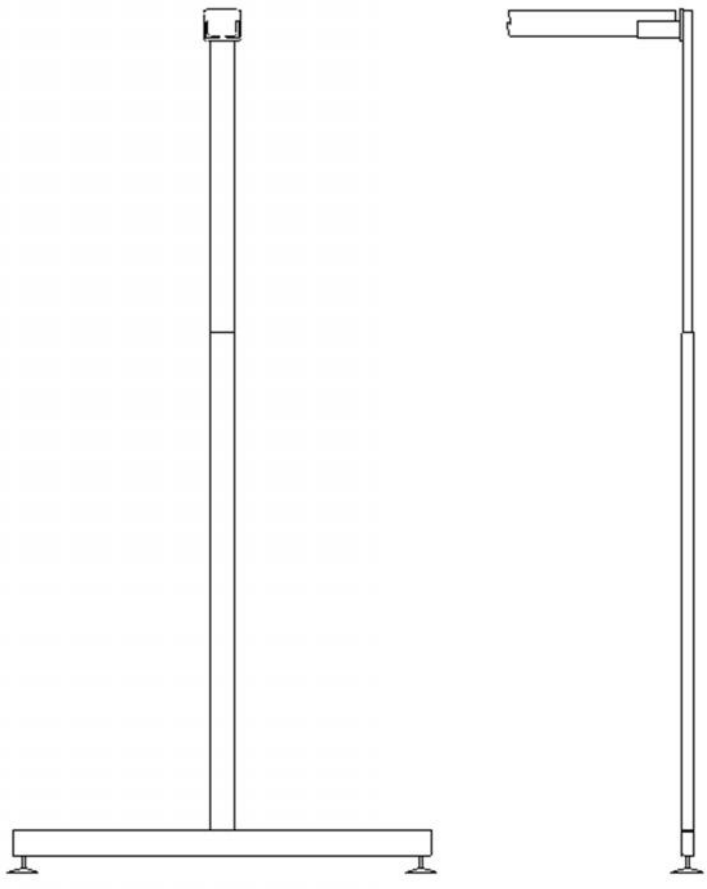
Bends



H (or XY) Gantry with Wall Fixing

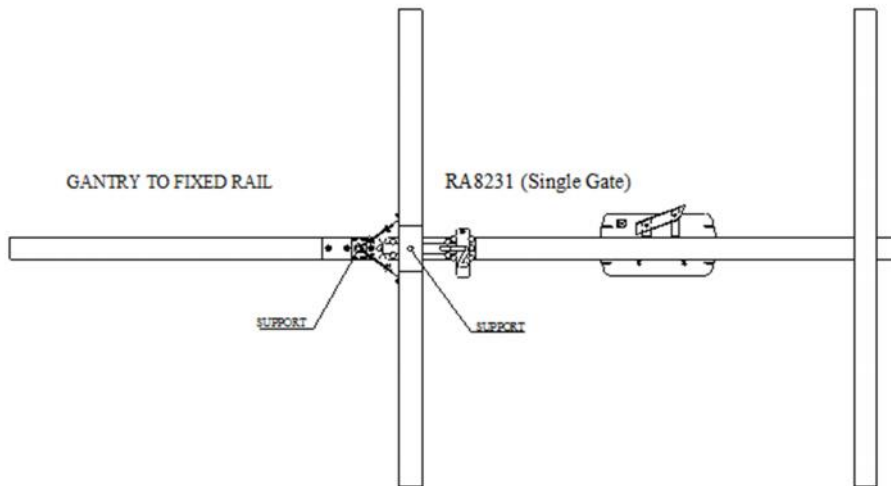


Floor Stand Base

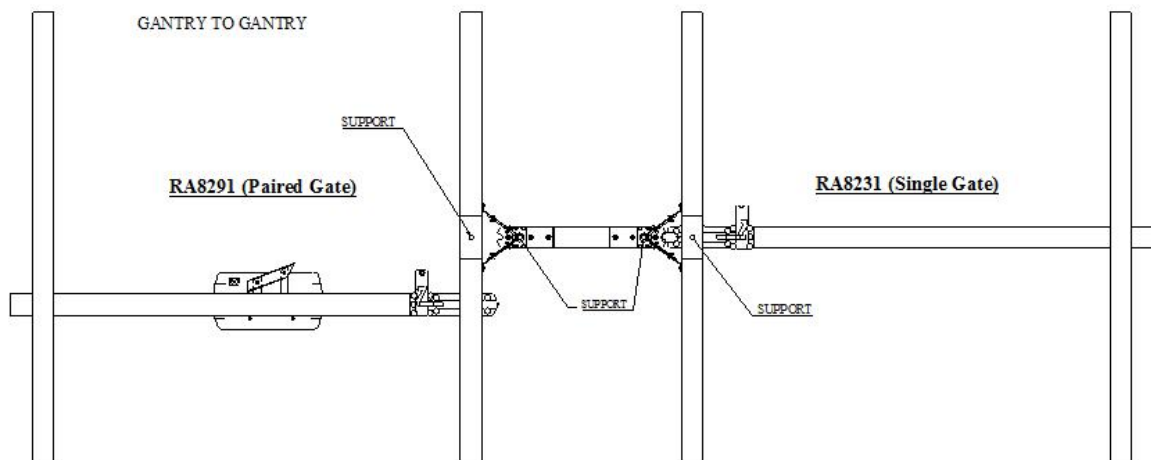


Gated System Detail

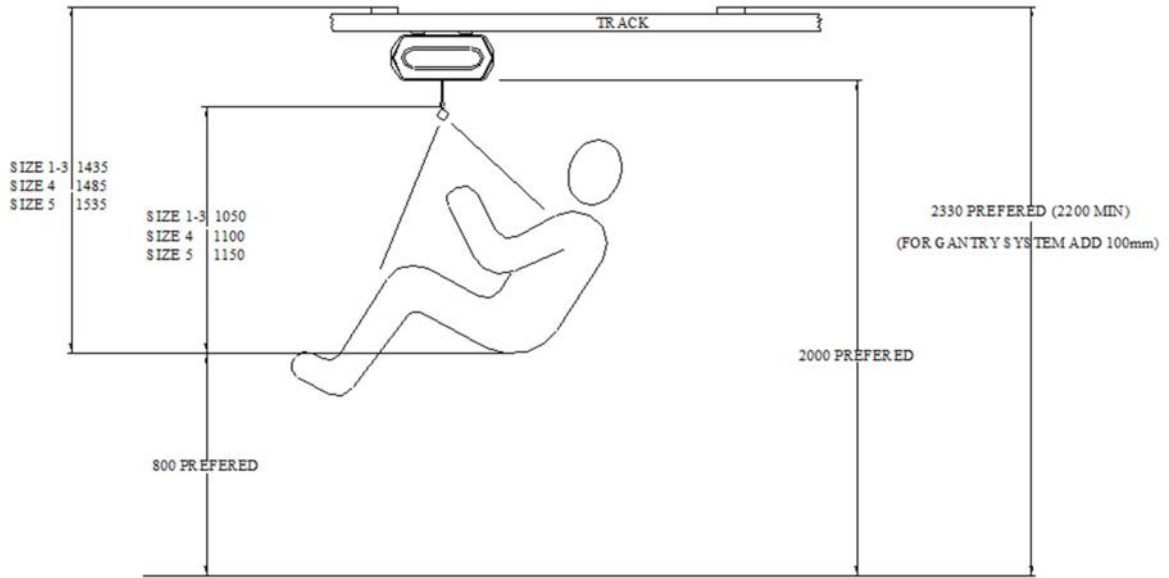
Single Gate – Straight Rail to H Gantry



Dual Gates - Single with Paired – Gantry to Gantry



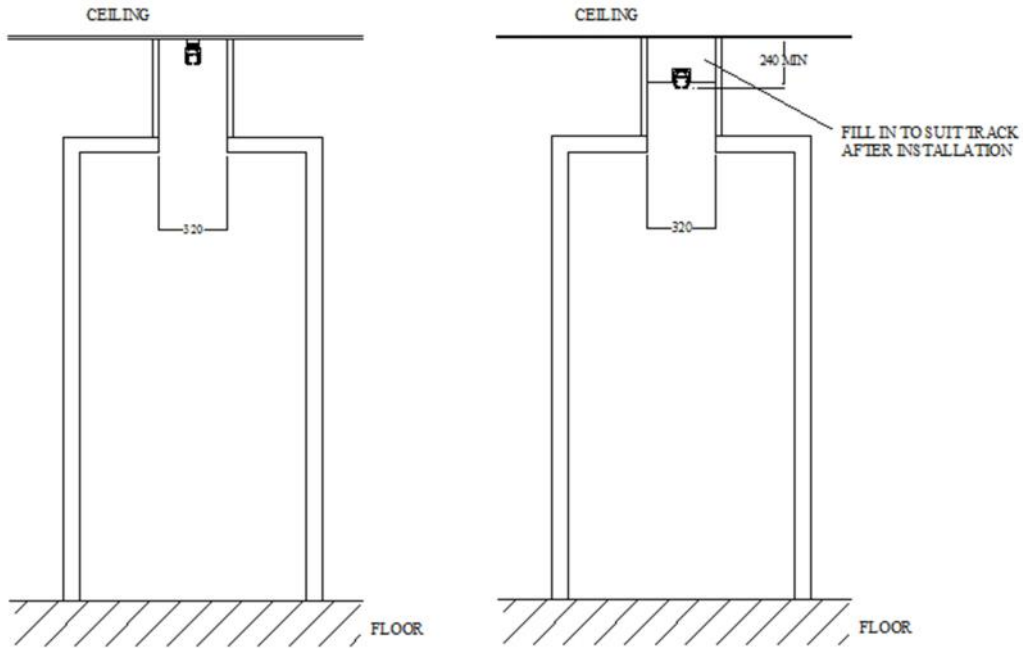
Skyframe Height Installation Chart



NOTE : THE PREFERRED 2000 UNDER THE CASSETTE IS FOR ADEQUATE HEAD CLEARANCE

Doorway Requirements (Standard Door)

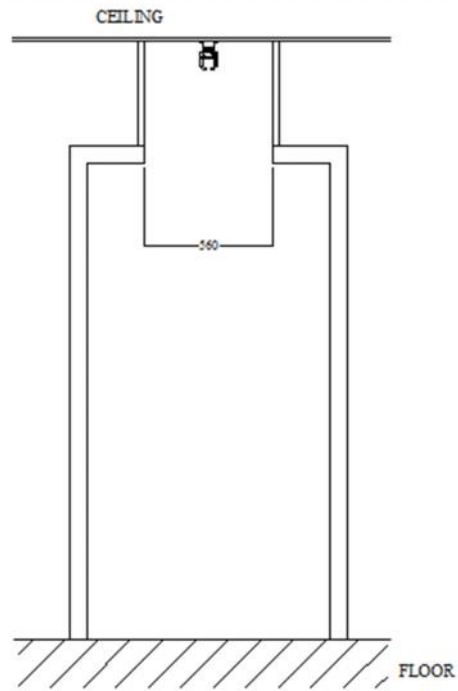
Room to Room



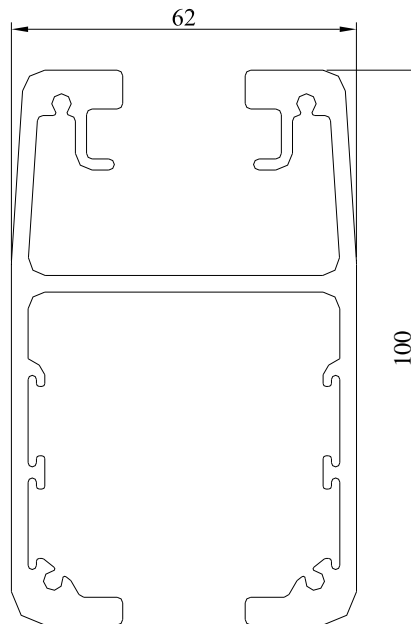
without gates

with gates

Room to Room Skyship Cassette



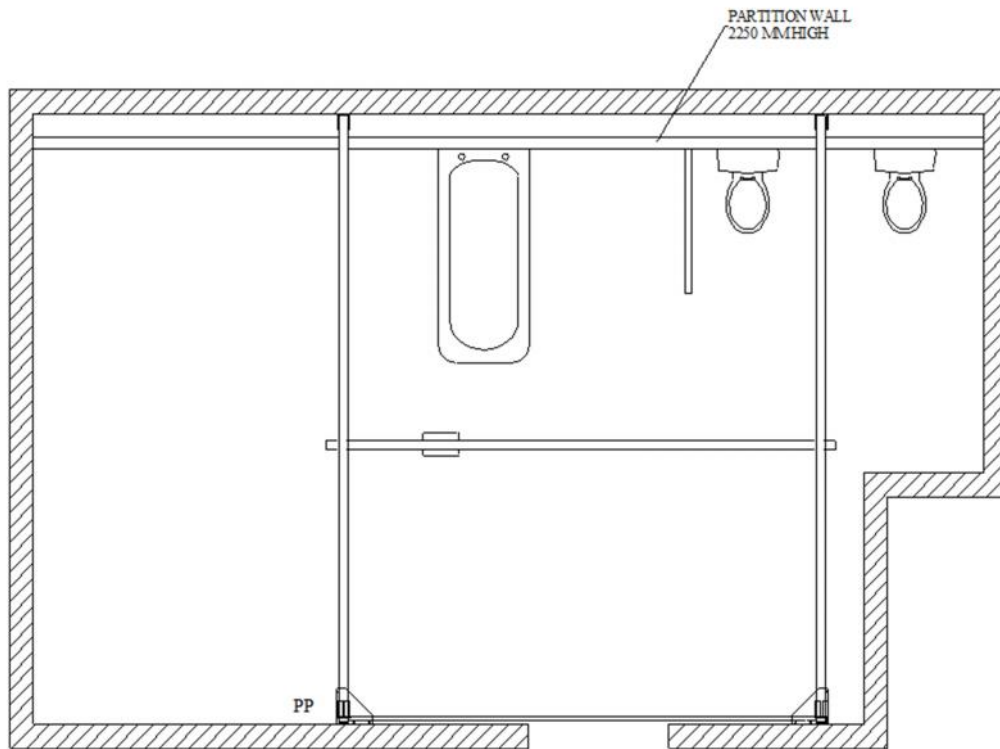
Mk7 Track Profile (RX94806)



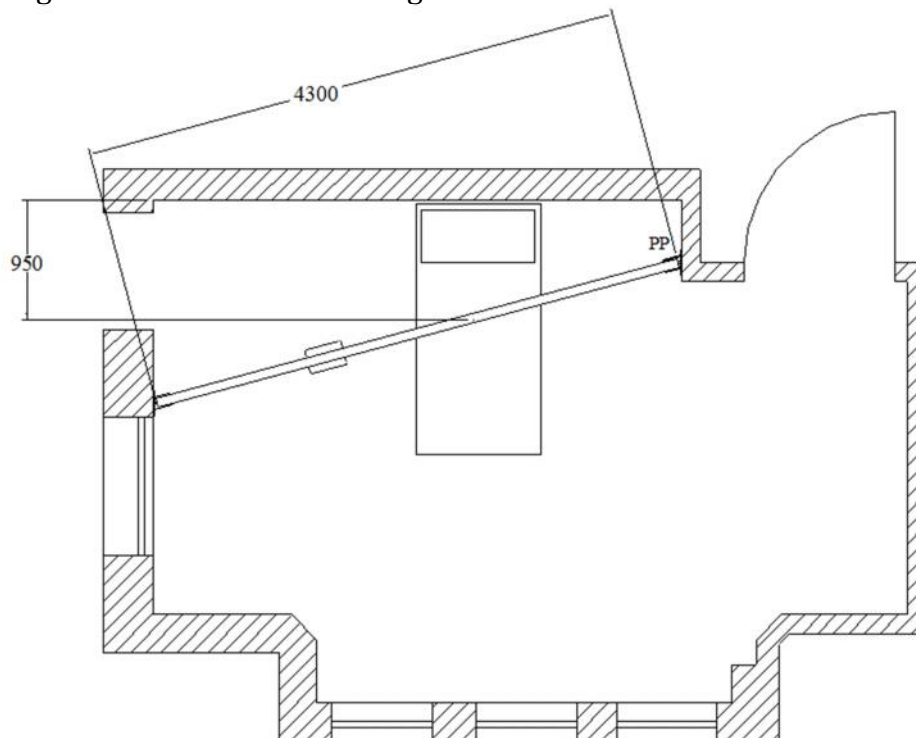
Maximum load 160kg for unsupported span of 4 metres

Typical Layout Examples

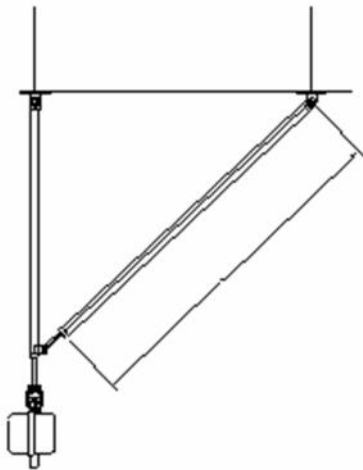
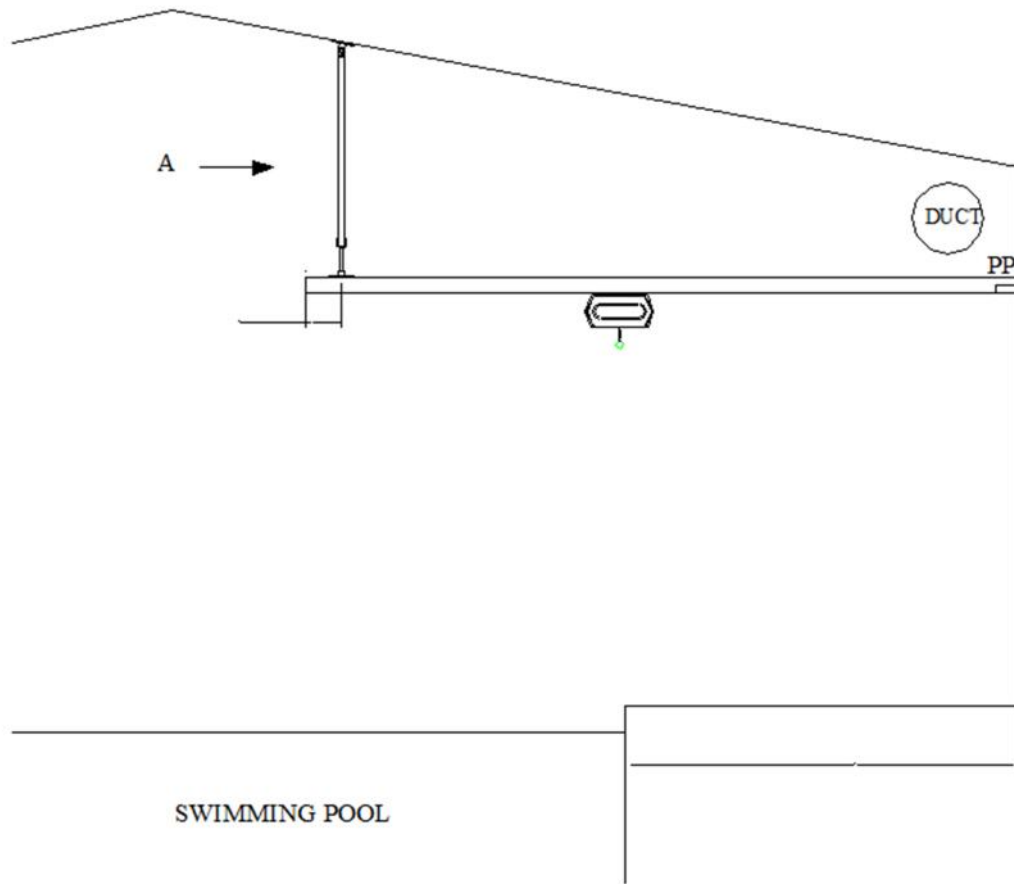
Gantry system with wall fix and freestanding fixtures



Straight rail with wall and ceiling fixtures



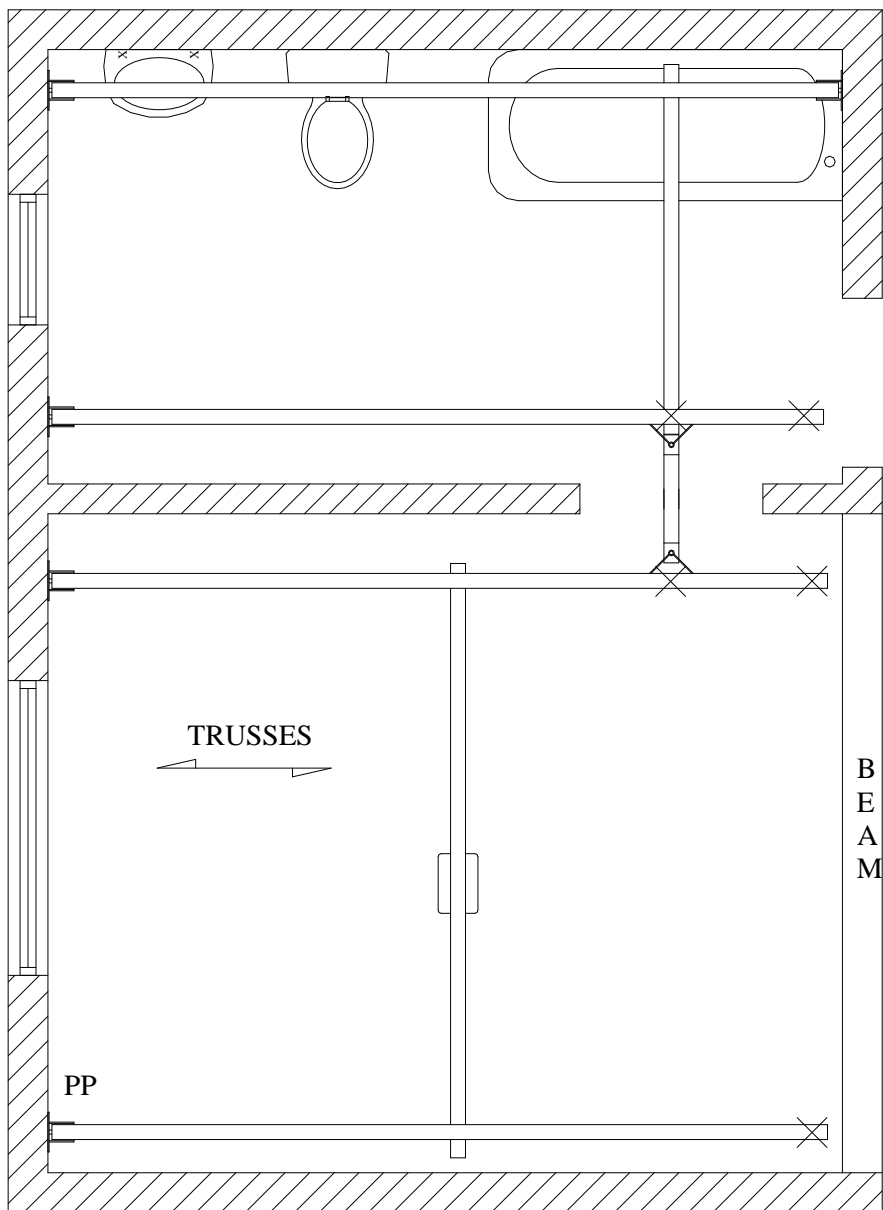
Swimming Pool with brace and brackets



VIEW ON A



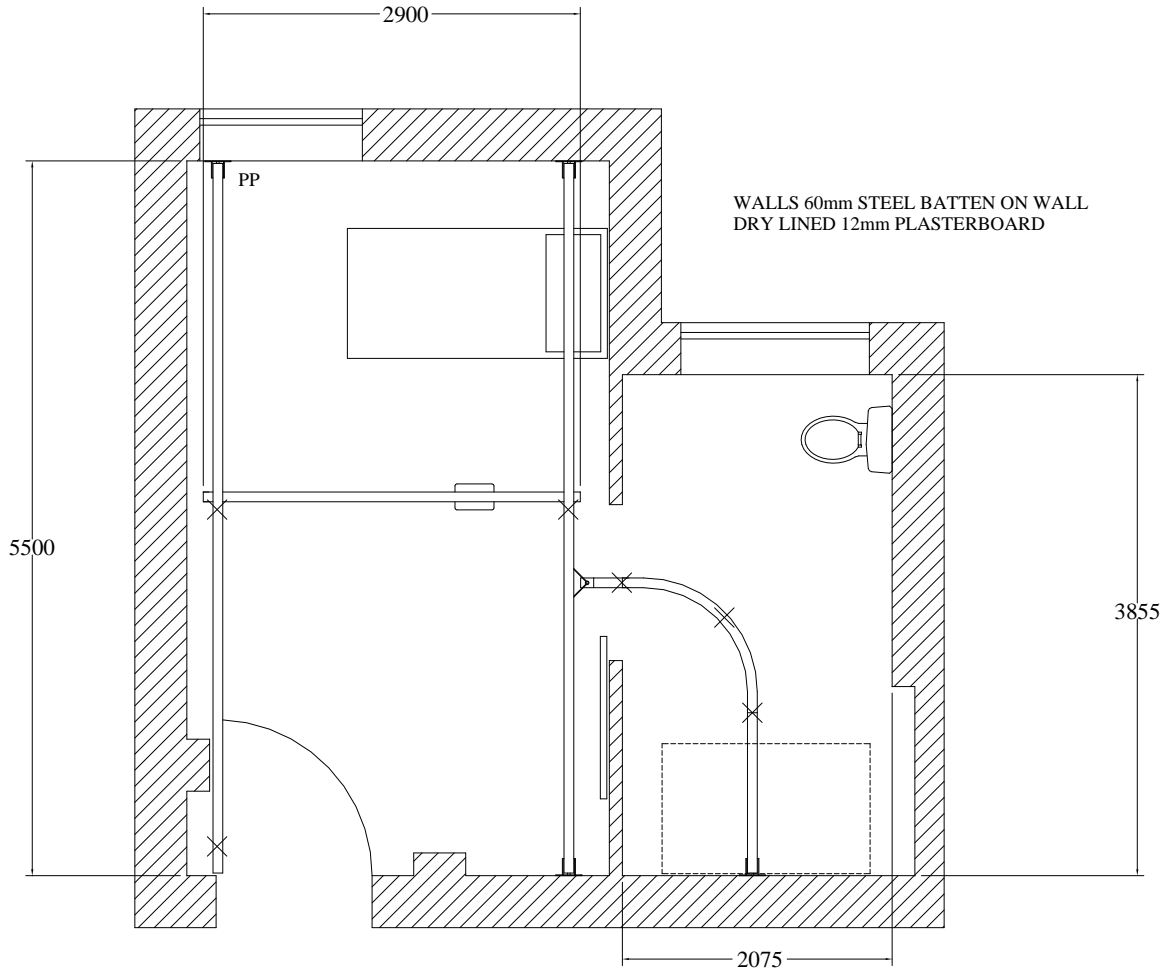
Double Gantry System With Gates



DOUBLE GANTRY WITH GATES
WALLS - BLOCK
CEILING CONSTRUCTION - TRUSSES. LOFT ACCESS.
CEILING HEIGHT - 2305MM

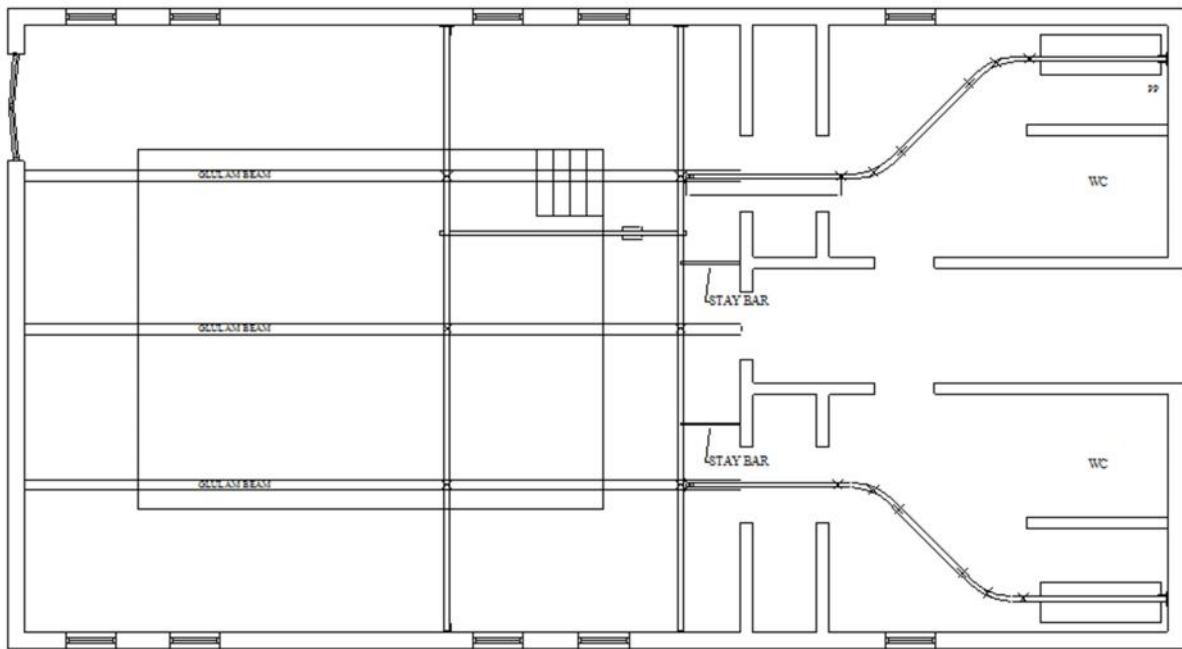
BEDROOM/BATHROOM

Bedroom to En-suite with gate and 90° bend



SINGLE TRACK - WALL FIX
WALLS :- SOLID
CEILING CONSTRUCTION - CONCRETE SLAB WITH SUSPENDED CEILING TILES
CEILING HEIGHT - CONCRETE AT 3175
SUSPENDED REQUIRED AT 2400

Complex Gantry with 45° bends



Symmetrikit Installation Engineers

CIS (Construction Industry Scheme) Authorisation: We hold a current CIS5 exemption by the Inland Revenue.

Installation Engineers hold CSCS (Construction Skills Certification Scheme) certification which denotes they have undergone the Health & Safety Test for Patient Lift Installers.

We comply with Main Contractor Health & Safety Requirements which covers

- Health & Safety at work Method Statements Risk Assessments COSHH assessments Training Certificates Quality Assurance Environmental procedures

Our on-site safety representative is the main Installation Engineer