



Skyframe™

The science of lifting success



SYMMETRIKIT
POSTURAL CARE

HH a division of The Helping Hand Company

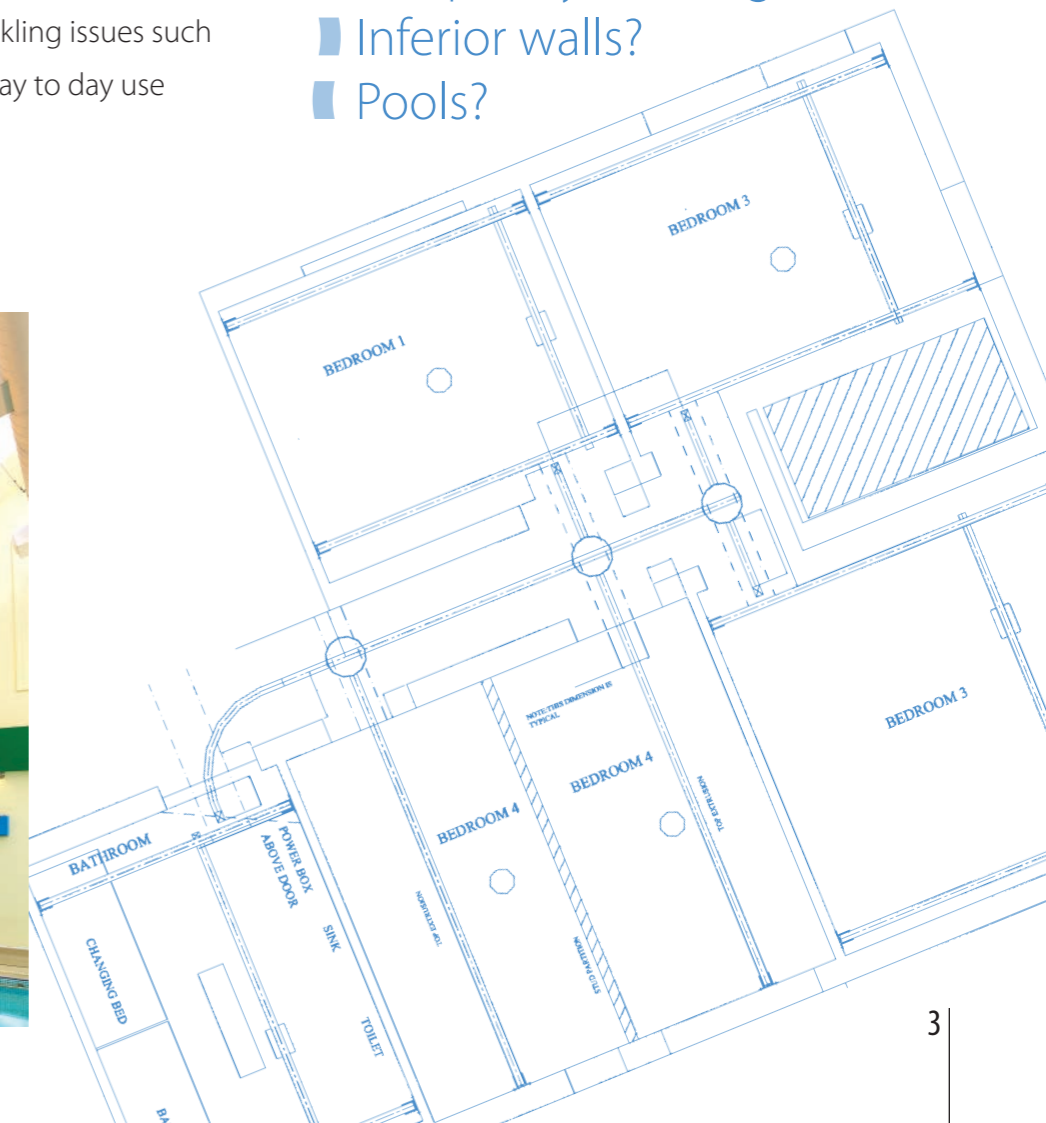


You have

the vision, we have the know how

However large or small your ceiling hoist project, we are happy to provide a complete service to designers, builders and users. Our Symmetrikit sales team are all trained to understand the needs of clients and carers. We are happy to advise on the ins and outs of different design options tackling issues such as sling compatibility and day to day use from the outset.

- High ceilings?
- Suspended ceilings?
- Composite beams?
- Non-load bearing walls?
- Temporary building?
- Inferior walls?
- Pools?



In House:

Design Installation* Maintenance



R&D Support:

- Special brackets
- bespoke systems
- drawing service
- advice on fixings

Once we have an understanding of what needs to be achieved, our engineering design team can provide a full liaison and drawing service to provide a well thought out cost effective solution. As manufacturers we can also tackle special bracketry as required and can take on the most challenging room designs including vaulted ceilings, suspended ceilings, composite beams and non load bearing walls.

When it comes to installation, you can be assured that you are dealing with a Constructionline* approved company with directly employed installation teams who are DBS checked and trained to work in both domestic environments and on large institutional projects.

Following installation we offer commissioning, training and planned maintenance/LOLER testing on both hoists and slings and should your needs change we can quote to relocate equipment as required to ensure that you always get the best from your investment.

**Constructionline approval is required by most major building contractors. Before selecting a supplier, please ensure that they have achieved this status.*

Skyframe™



Skyframe Track can be wall or ceiling mounted. Free standing options are available where a temporary solution is required or no permanent fixing can be made. Straight rails can span up to 4.25m between fixings if required*. This extra span length often means that we can install wall to wall without needing extra steelwork in the ceiling.

- Wall or ceiling mounted
- 4.25m span between fixings
- Free standing options

**Rated to 160kg with Mk7 track. A wall brace may be required*





Skyframe™

The Skyframe system incorporates everything you could need to create a seamless moving and handling system into your building: curves, straights, turntables, gates, flush mounted or suspended track and power traverse for greater independence.



"H" frames (or x-y systems) are popular as they offer great room coverage and flexibility when it comes to locating furnishings.

When choosing a pool lift, remember that many clients with more profound physical difficulties cannot easily maintain a seating position. For these clients an overhead hoist and a suitable sling will be safer than a pool side chair hoist. Symmetrikit offer a choice of pool slings including the new wearable hydro gym sling. See the video on <https://www.youtube.com/watch?v=fXBRp-OZaiU>

** Gates cannot be used with flush mounted "H" systems*



Skyframe cassette with loop spreader bar

the Skyframe™ Hoist

- Low voltage permanent charging - **always ready for use**
- Low maintenance
- Compatible with Loop or Clip slings



The hoist charges through the track

The Skyframe lifting cassette is a permanent charge system; its 24v battery pack is always being charged wherever it is located meaning no false starts-it is always ready to go; no special charging points are required and no one needs to remember to plug it in. Being low voltage and corrosion free, it is perfectly safe to use for pools and bathrooms. Skyframe cassettes are capable of lifting 160kg or, for a little extra, the unit can take up to 375kg**

** With appropriate track fixings and spreader bar

the Skyship™ Hoist

The Skyship lifting cassette's permanent charge system means you are always ready to go. No false starts, no special charging points required and no one needs to remember to plug it in. Its 24v battery pack is being charged wherever it is located on the Skyframe track. Being low voltage and corrosion free, it's also perfectly safe for pools and bathrooms. Skyship cassettes are capable of lifting 160kg (25 stone)

- Futuristic cassette design
- Brightens up a clinical environment
- Blends in with sensory rooms and bedrooms
- Provides a distraction for those not used to hoists
- Low voltage coloured LED lighting with 3 sequences
- Low maintenance
- Low voltage permanent charging - always ready for use
- Compatible with Loop or Clip slings

Electrical: 24v operating system, 220/240 volt charger





The specialists in moving, handling & complex lifting and positioning

Our Symmetrikit sales team specialise in meeting the 24 hour positioning needs of the most dependent clients.

PoserTM
SYSTEM

Young and old, we find that 'Poser' Spreader bars and slings offers our clients a more acceptable lifting experience.

'Poser' spreader bars automatically adjust their geometry as clients move between sitting and lying positions. This eliminates "bunching" and "crunching" resulting in a safer more comfortable lift.

When lifting back into a chair, 'Poser', positions clients correctly, right at the back without any dragging or pushing.

'Poser' also offers simplicity; training time is reduced and your sling range can be narrowed.

Simple, seamless integration

*Poser
Spreader*

*Bariatric
Spreader*

*Standard
Spreader*



Sling Compatibility

Interchangeable spreader bars allow Skyframe to work with both “clip” and “loop” slings. Such sling styles are widely used throughout the community so this option is great for schools, day centres, public changing rooms and anywhere else where service users arrive with their own slings.



Integrated Scale

The spreader bar can be fitted with a scale for easy client weight assessment.

Maximum weight 181Kg (400lb)

The Skyframe hoist can also be specified for bariatric situations, with a maximum lifting capacity of 375Kgs (826lb)

NEW **COOLOVER^{TR3}**
with Omnitherm

ALLDAY SLING

For comfort and active temperature management

Omnitherm microcapsules within the threads of the fabric
Graphic representation

We have designed our latest Allday fabric to offer a safe, effective "sit in" sling. The knit has been engineered for pressure relief (it has more stretch than most cushion covers) while being strong enough to be safe with minimal gusseting.

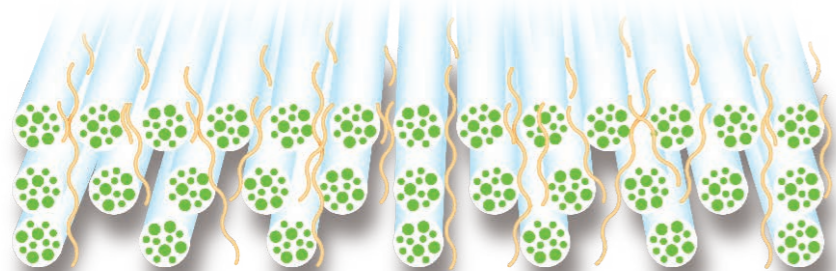
Now loaded with Omnitherm[®], these slings work to maintain a more normal temperature, absorbing heat when you get hotter and releasing it back when you cool down again.



Omnitherm[®] Thermal Comfort



NEW Progressive knit - this new knitting technique produces a fabric which encourages moisture to move through the fabric and away from the body. All helped by a hygroscopic 20% bamboo mix



Skyframe Track

Distance between suspension points

	6m	5	<4.25
Mk 7	114Kg	136Kg	160Kg

Track: White powder coated aluminium with 24v permanent charging

Skyframe Hoists

Cassette	Charging	Motor	Charger amps	Lift range	Min rec. ceiling height*	Capacity Kg/LB	Lifting speed	Traverse speed
Skyframe	Constant trickle	24v/12 amp fused	1	3m	2.2m	200	≅ 40mm/s ⁻¹	n/a
Skyframe power traverse	Constant trickle	24v/12 amp fused	2	3m	2.2m	200	≅ 40mm/s ⁻¹	≅ 33.3mm/s ⁻¹
Skyship	Constant trickle	24v/12 amp fused	2	3m	2.2m	200	≅ 40mm/s ⁻¹	n/a
Skyframe HS	Handset	24v/12 amp fused	2	3m	2.2m	200	≅ 40mm/s ⁻¹	n/a
Skyframe bariatric	Constant trickle	24v/12 amp fused	1	3m	2.2m	350	≅ 20mm/s ⁻¹	n/a

* with poser hanger

BSEN10535

BS ES EN ISO-10535 UK & foreign patents applied for and pending.

Due to continuous development, we reserve the right to change specification without notice. E&O.E



College of Occupational Therapists



Tel: **01531 635388**

www.**Symmetrikit.com**

sales@**Symmetrikit.com**



HH a division of The Helping Hand Company